



**FITTING INSTRUCTIONS FOR AB0028 ADVENTURE BARS**  
**BMW K1600 GT 2017-**



**THIS KIT CONTAINS THE ITEMS PICTURED AND LABELLED BELOW.**  
**DO NOT PROCEED UNTIL YOU ARE SURE ALL PARTS ARE PRESENT.**

Please note that the way the kit is packed does not necessarily represent the way of mounting to the bike  
Please note that in cases where kits are packed with rubber washers holding the components onto the bolt – *the rubber washers should be thrown away!*

THE PARTS SHOWN MAY BE REPRESENTATIVE ONLY (FOR CLARITY OF INSTRUCTIONS ONLY)

**Digital copies of these instructions are available to download from [www.rg-racing.com](http://www.rg-racing.com)**

**GENERAL TORQUE SETTINGS**

M4 BOLT = 8Nm  
M5 BOLT = 12Nm  
M6 BOLT = 15Nm  
M8 BOLT = 20Nm  
M10 BOLT = 40Nm

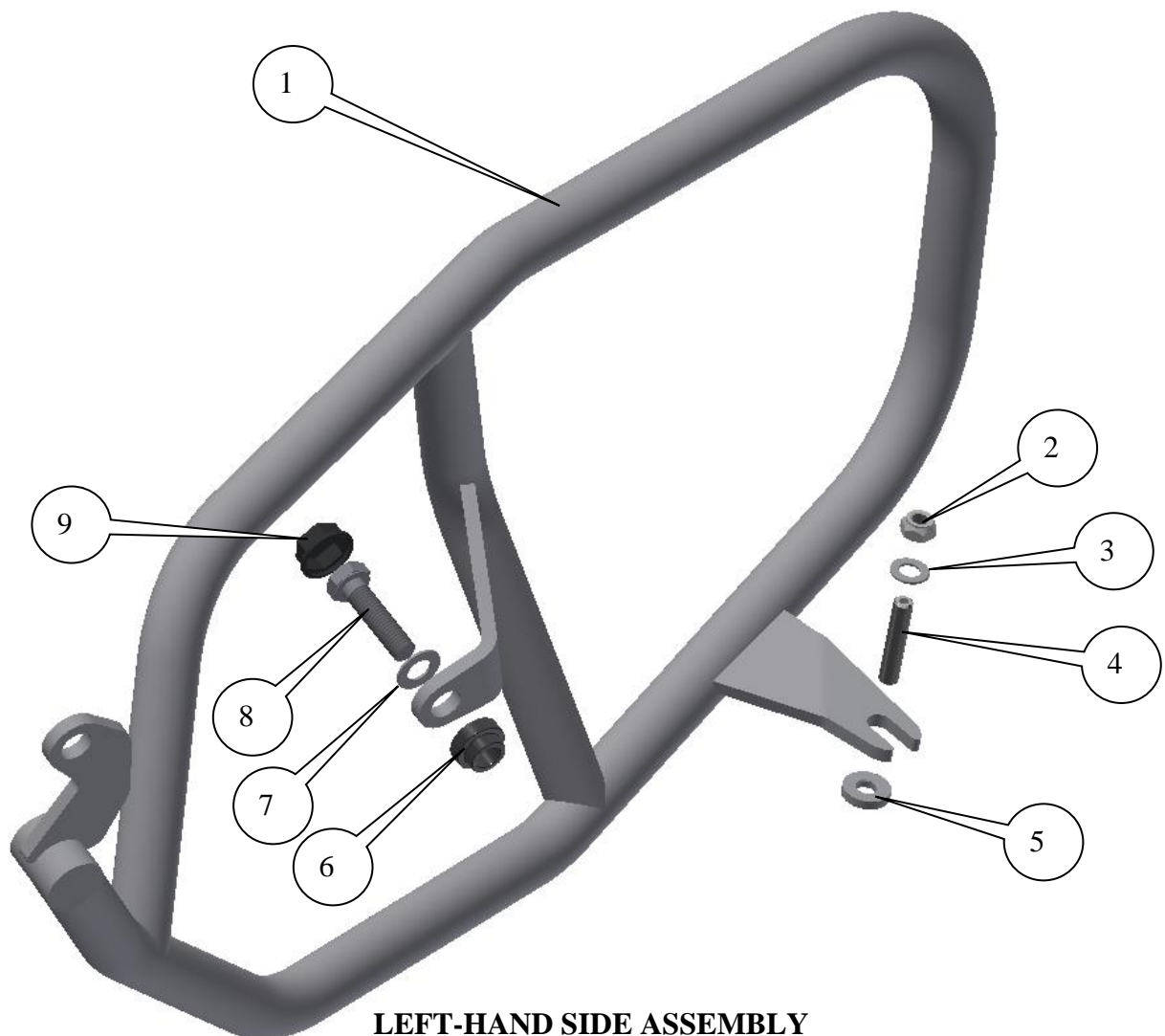
**TOOLS REQUIRED**

- Socket set to include 17mm A/F socket, T45, T50 Torx bits and wrench.
- Set of Allen keys to include 4 & 8mm A/F (or socket bit and wrench).
  - 13mm Spanner.
- Torque wrench (up to 40Nm).



**In This Kit, There Should Be**

- 1x Left Hand Side Adventure Bar (AB0028 LHS WELDED ASSY).
- 1x Right Hand Side Adventure Bar (AB0028 RHS WELDED ASSY).
  - 1x Left Hand Side Mid Mount Spacer (S1159-12mm long).
  - M10x1.5x40mm long hex head bolt (LHS Mid Mount Bolt).
  - 1x Right Hand Side Mid Mount Spacer (S0774-24mm long).
  - M10x1.5x40mm Cap hex head bolt (RHS Rear Mount Bolt).
  - M10x1.5x50mm long hex head bolt (RHS Mid Mount Bolt).
    - 2x Front Mount Spacers (S0985-4mm long).
      - 1x M10 Flat Cap (NC0010-RHS-rear).
      - 2x M10 Washers (L&RHS).
      - 2x M8 Washers (L&RHS front).
      - 2x M8 Nyloc Nuts (L&RHS front).
- 2x M8x1.25x45mm long Set Screws (front mounts L&RHS).
  - 2x M10 Nut Caps (NC0001).

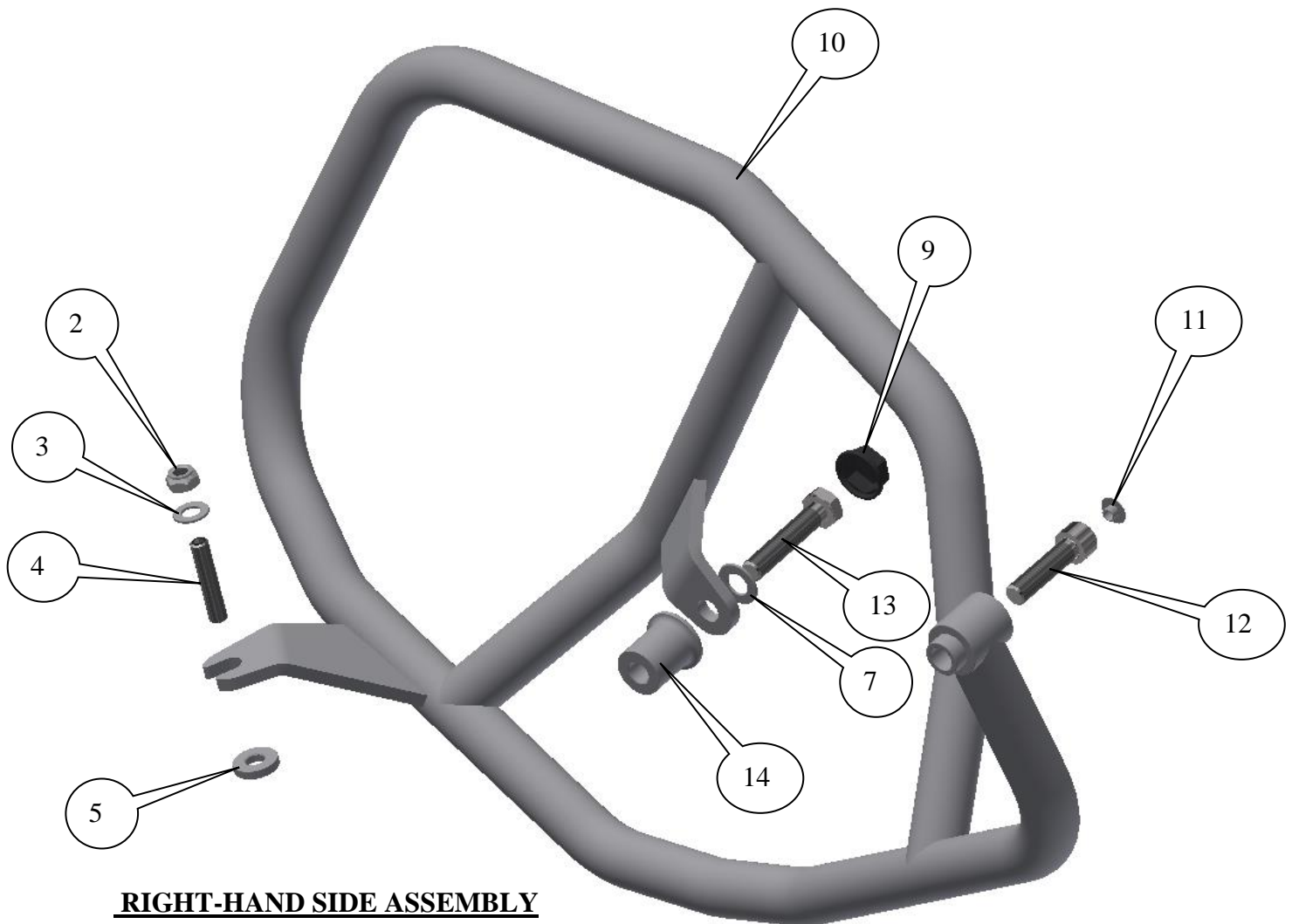


**LEFT-HAND SIDE ASSEMBLY**

R&G

Unit 1, Shelley's Lane, East Worldham, Alton, Hampshire, GU34 3AQ

Tel: +44 (0)1420 89007 Fax: +44 (0)1420 87301 [www.rg-racing.com](http://www.rg-racing.com) Email: [info@rg-racing.com](mailto:info@rg-racing.com)



### RIGHT-HAND SIDE ASSEMBLY

#### LEGEND

ITEM 1 = ADVENTURE BAR LEFT-HAND SIDE (AB0028 LHS ASSY) (x1).

ITEM 2 = M8 NYLOC NUTS (x2).

ITEM 3 = M8 WASHERS (x2).

ITEM 4 = M8x1.25x45mm LONG SET SCREWS (FRONT MOUNTS L&RHS) (x2).

ITEM 5 = S0985 FRONT MOUNT SPACERS (4mm LONG).

ITEM 6 = S1159 LHS MID MOUNT SPACER (12mm LONG).

ITEM 7 = M10 WASHERS (x2).

ITEM 8 = M10x1.5x40mm HEX HEAD BOLT (LHS MID MOUNT) (x1).

ITEM 9 = M10 NUT CAPS (NC0001) (x2).

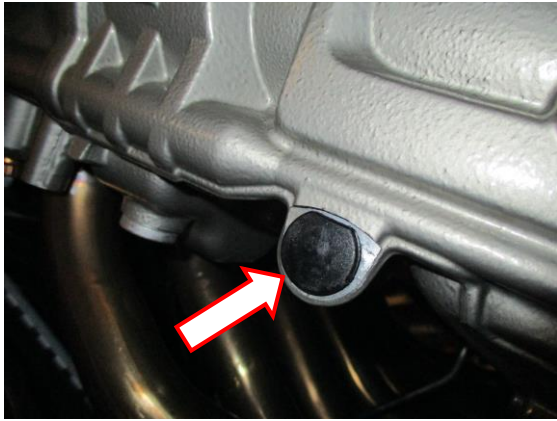
ITEM 10 = ADVENTURE BAR RIGHT-HAND SIDE (AB0028 RHS ASSY) (x1).

ITEM 11 = M10 FLAT CAPS (NC0010) (x1).

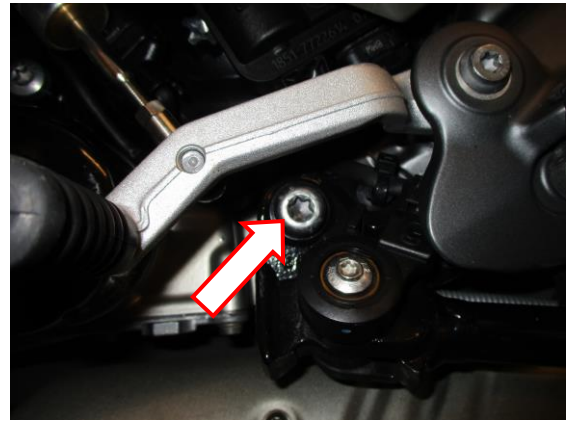
ITEM 12 = M10x1.5x40mm CAP HEAD BOLT (RHS REAR MOUNTS) (x1).

ITEM 13 = M10x1.5x50mm HEX HEAD BOLT (RHS MID MOUNT) (x1).

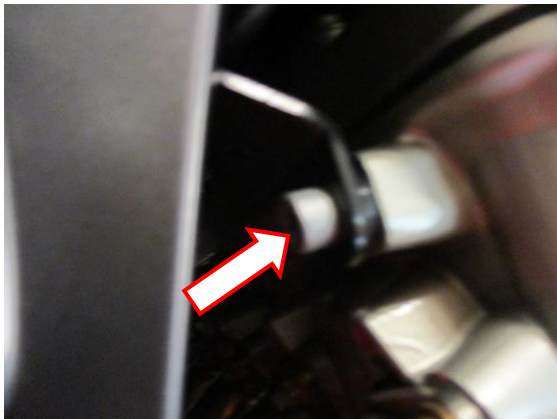
ITEM 14 = S0744 LHS MID MOUNT SPACER (24mm LONG).



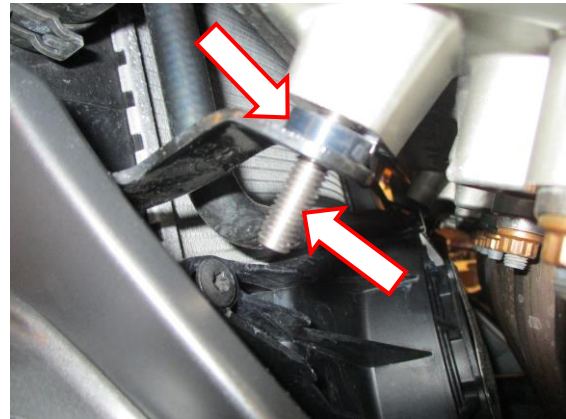
PICTURE 1



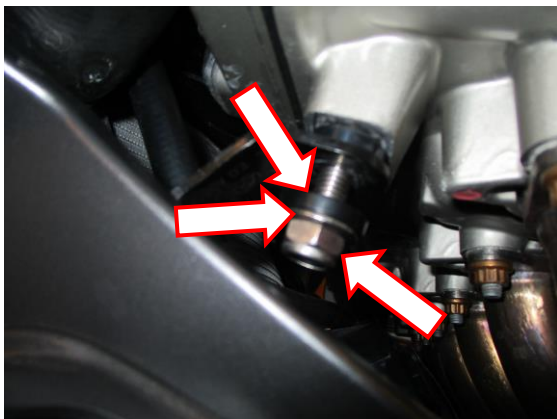
PICTURE 2



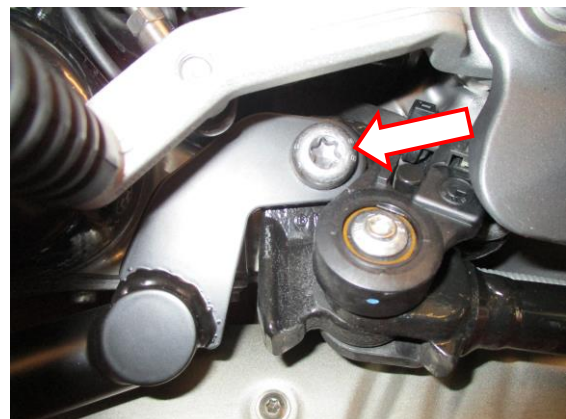
PICTURE 3



PICTURE 4



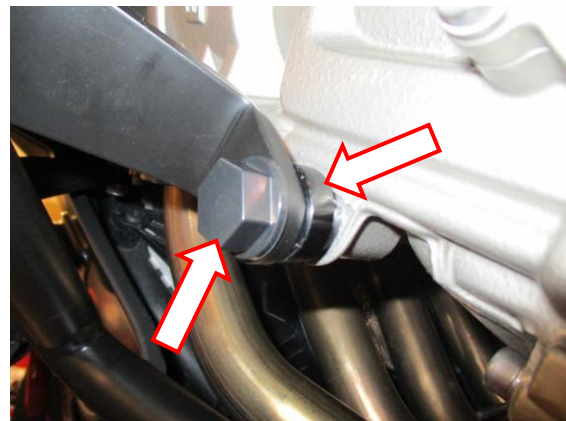
PICTURE 5



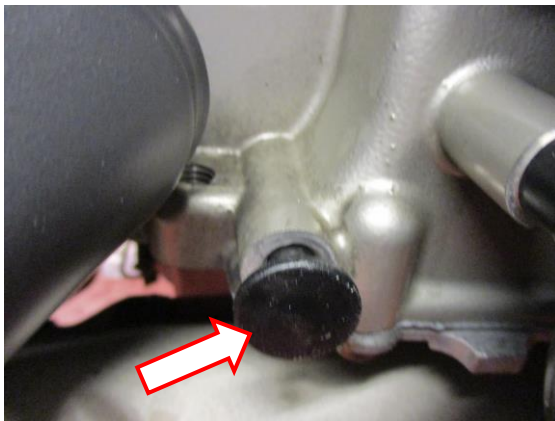
PICTURE 6



PICTURE 7



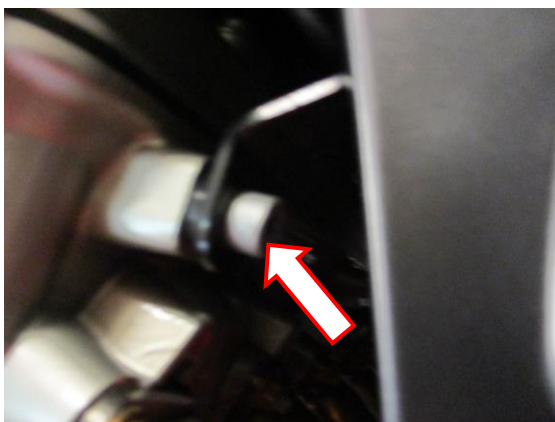
PICTURE 8



PICTURE 9



PICTURE 10



PICTURE 11



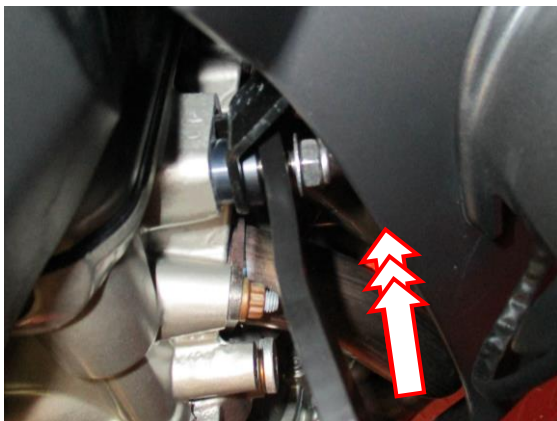
PICTURE 12



PICTURE 13



PICTURE 14



PICTURE 15



PICTURE 16



PICTURE 17



PICTURE 18



## **FITTING INSTRUCTIONS**

### **Near side (left side as you sit on bike)**

- Remove the plastic plug arrowed in picture 1.
- Remove the bolt arrowed in picture 2.
- Remove the bolt arrowed in picture 3 (this is the spot light bracket bolt, it has spacer behind it which must be reused)
- Replace the bolt just removed with one of the long set screws (item 4) as shown in picture 4 (it has an Allen key slot in one end which should be used for tightening) please ensure the original spacer remains in place.
- Place one of the thin spacers (item 5), one of the M8 washers (item 3) and one of the Nyloc nuts (item 2) onto the set screw as shown in picture 5.
- Offer the left-hand side assembly (item 1) into position as shown in the top picture and secure using the original bolt as shown in picture 6, do not fully tighten at this stage.
- Position the slotted bracket over the front set screw as shown in picture 7.
- Place one of the M10 washers (item 7) onto the shorter M10 hex head bolt (item 8), then place this assembly through the hole in the mid mounting plate as shown in picture 8.
- Place the shorter stepped spacer (item 6) over the exposed thread and secure the bolt as shown in picture 8.
- Tighten all the nuts and bolts ensuring the adventure bars remain clear of all fairing panels.

### **Off side (right side as you sit on bike)**

- Remove the plastic plug arrowed in picture 9.
- Remove the bolt arrowed in picture 10.
- Remove the bolt arrowed in picture 11 (this is the spot light bracket bolt, it has spacer behind it which must be reused)
- Replace the bolt just removed with one of the long set screws (item 4) (it has an Allen key slot in one end which should be used for tightening) please ensure the original spacer remains in place.
- Place one of the thin spacers (item 5), one of the M8 washers (item 3) and one of the Nyloc nuts (item 2) onto the set screw as shown in picture 12.
- Offer the right-hand side assembly (item 10) into position as shown in the top picture and secure using the M10 cap head bolt (item 12) as shown in picture 13, do not fully tighten at this stage.
- Position the slotted bracket over the front set screw as shown in picture 15.
- Place one of the M10 washers (item 7) onto the longer M10 hex head bolt (item 13), then place this assembly through the hole in the mid mounting plate as shown in picture 14.
- Place the longer stepped spacer (item 14) over the exposed thread and secure the bolt as shown in picture 14.
- Tighten all the nuts and bolts ensuring the adventure bars remain clear of all fairing panels.
- Fit the two bolt covers (item 9) over the hex head bolts as shown in pictures 16 and 17.
- Fit the flat bolt cover (item 11) into the cap head bolt as shown in picture 18.

ISSUE 1 08/11/2018 (NSY)



#### **CONSUMER NOTICE**

The catalogue description and any exhibition of samples are only broad indications of the Products and R&G may make design changes which do not diminish their performance or visual appeal and supplying them in such state shall conform to the order. The Buyer acknowledges no representation or warranty (other than as to title) has been given or will apply to the Products other than those in R&G's order or confirmation and the Buyer confirms it has chosen the Products as being of merchantable quality and suitable for its particular purposes. Where R&G fits the Products or undertakes other services it shall exercise reasonable skill and care and rectify any fault free of charge unless the workmanship has been disturbed. The Buyer is responsible for ensuring that the warranty on the motorcycle is not affected by the fitting of the Products. On return of any defective Products R&G shall at its option either supply a replacement or refund the purchase money but shall not be liable if the Products have been modified or used or maintained otherwise than in accordance with R&G's or manufacturer's instructions and good engineering practice or if the defect arises from accident or neglect. Other than identified above and subject to R&G not limiting its liability for causing death and personal injury, it shall not be liable for indirect or consequential loss and otherwise its liability shall be limited to the amounts paid by the Buyer for the Products or the fitting or service concerned. These terms do not affect the Buyer's statutory rights.

#### **R&G RETURNS POLICY (NON-FAULTY GOODS)**

Returns must be pre-authorized (if not pre-authorized the return will be rejected). Goods may only be returned direct to us if they were purchased direct from us (customer must prove if necessary). Otherwise to be returned to original vendor. Goods must be in re-sellable condition, in the opinion of R&G. All returns are subject to a 25% restocking and handling fee (25% of the gross value exc. P&P – at the prevailing price at time of purchase). The customer must pay any and all carriage charges. No returns of discontinued products, unless within 14 days of purchase. This policy does not affect your statutory rights and does not refer to faulty goods.

R&G

Unit 1, Shelley's Lane, East Worldham, Alton, Hampshire, GU34 3AQ

Tel: +44 (0)1420 89007 Fax: +44 (0)1420 87301 [www.rg-racing.com](http://www.rg-racing.com) Email: [info@rg-racing.com](mailto:info@rg-racing.com)





**NOTICE DE MONTAGE POUR AB0028 BARRES AVENTURE**  
**BMW K1600 GT 2017-**



**Le kit contient les articles exposés ci-dessous, vérifier que toutes les pièces soient présentes avant de procéder au montage.**

**La façon dont le kit est emballé ne correspond pas forcément à la façon de monter les pièces sur la moto.**

**LES PARTIES PRESENTEES PEUVENT ETRE UNIQUEMENT REPRESENTATIVES  
(POUR LA CLARTE DES INSTRUCTIONS UNIQUEMENT)**

**Notice disponible au téléchargement sur [www.rg-racing.com](http://www.rg-racing.com)**

**VALEURS DE SERRAGE RECOMMANDEES :**

**M4 BOULON = 8Nm  
M5 BOULON = 12Nm  
M6 BOULON = 15Nm  
M8 BOULON = 20Nm  
M10 BOULON = 40Nm  
M12 BOULON = 40 Nm**

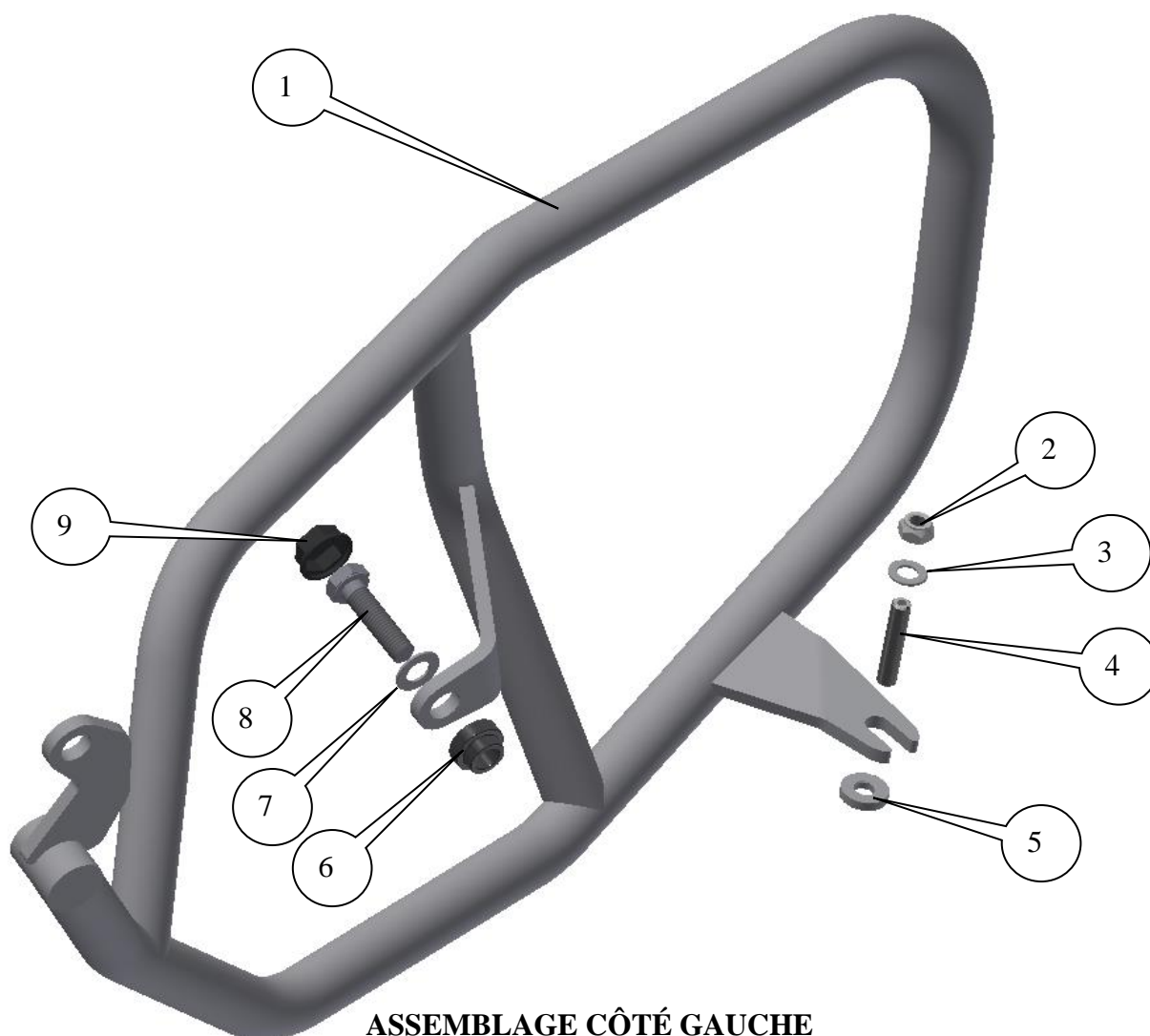
**OUTILS REQUIS**

- Clé à cliquet + douille de 17mm, clés Torx T45, T50.
  - Clés Allen 4 & 8mm (ou clé + douille).
    - Clé à molette 13mm.
  - Clé dynamométrique (jusqu'à 40Nm).



**LE KIT DOIT CONTENIR:**

- 1x Barre Aventure côté gauche (AB0028 ENSEMBLE SOUDÉ CÔTÉ GAUCHE).
- 1x Barre Aventure côté droit (AB0028 ENSEMBLE SOUDÉ CÔTÉ DROIT).
- 1x Entretoise de support intermédiaire côté gauche (S1159-12mm de long).
- M10x1.5x40mm Boulon (Boulon de support intermédiaire côté gauche).
- 1x Entretoise de support intermédiaire côté droit (S0774-24mm de long).
- M10x1.5x40mm Boulon (Boulon de support arrière côté droit).
- M10x1.5x50mm Boulon (Boulon de support intermédiaire côté droit).
  - 2x Entretoises de support avant (S0985-4mm de long).
  - 1x M10 bouchon plat (NC0010-arrière droit).
  - 2x M10 Rondelles (Côté gauche et côté droit avant).
  - 2x M8 Rondelles (Côté gauche et côté droit avant).
  - 2x M8 Écrous (Avant gauche et avant droit).
- 2x M8x1.25x45mm Vis (Supports avant gauche et avant droit).
  - 2x M10 Bouchons d'écrou (NC0001).

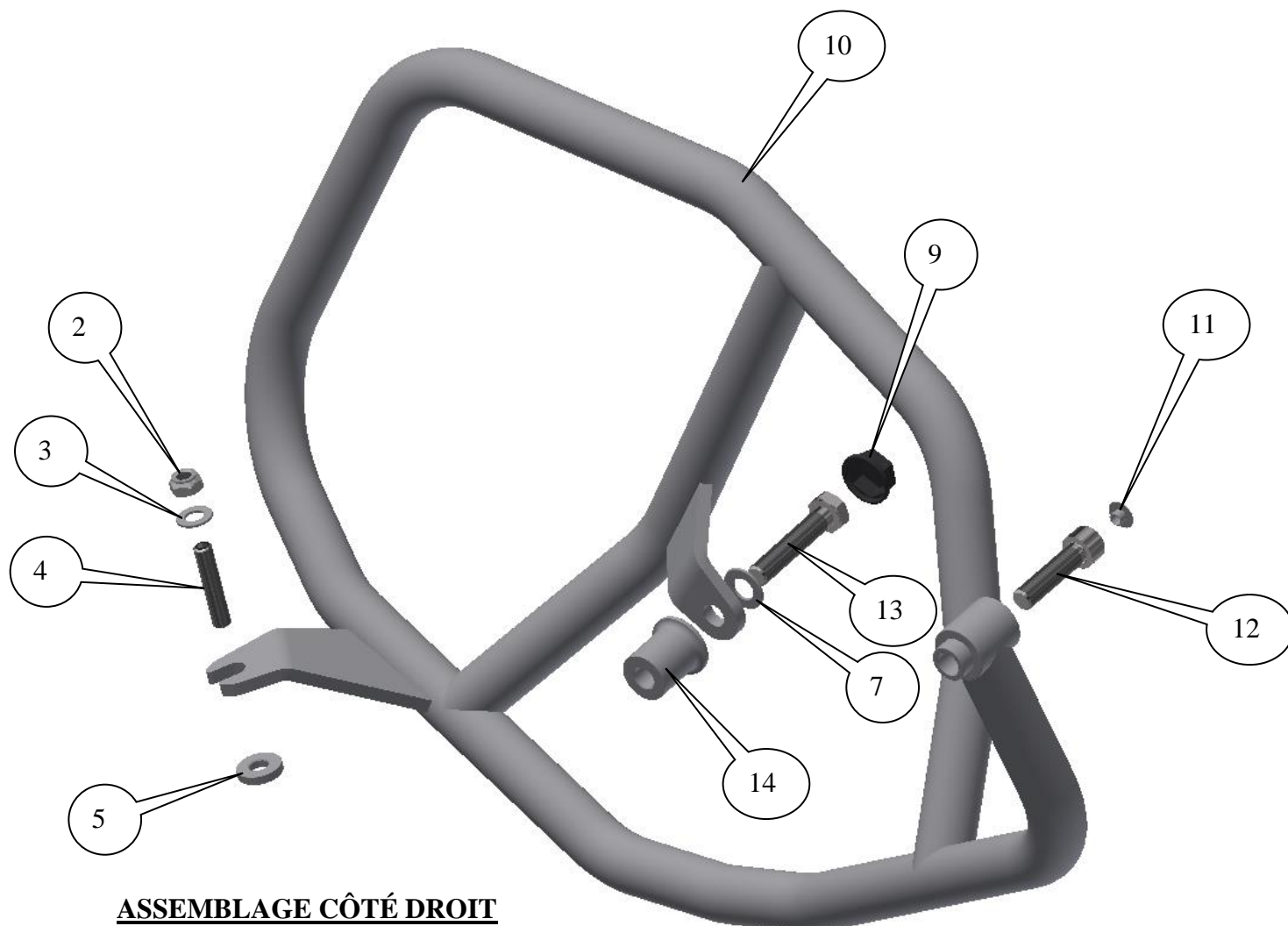


**ASSEMBLAGE CÔTÉ GAUCHE**

R&G

Unit 1, Shelley's Lane, East Worldham, Alton, Hampshire, GU34 3AQ

Tel: +44 (0)1420 89007 Fax: +44 (0)1420 87301 [www.rg-racing.com](http://www.rg-racing.com) Email: [info@rg-racing.com](mailto:info@rg-racing.com)



### ASSEMBLAGE CÔTÉ DROIT

#### LÉGENDE

- ARTICLE 1 = BARRE AVENTURE CÔTÉ GAUCHE (AB0028 LHS ASSY) (x1).  
 ARTICLE 2 = M8 ÉCROUS (x2).  
 ARTICLE 3 = M8 RONDELLES (x2).  
 ARTICLE 4 = M8x1.25x45mm VIS (SUPPORTS AVANT GAUCHE ET DROIT) (x2).  
 ARTICLE 5 = S0985 ENTRETOISES DE SUPPORT AVANT (4mm DE LONG).  
 ARTICLE 6 = S1159 ENTRETOISES DE SUPPORT INTERMÉDIAIRE GAUCHE (12mm DE LONG).  
 ARTICLE 7 = M10 RONDELLES (x2).  
 ARTICLE 8 = M10x1.5x40mm BOULON (SUPPORT INTERMÉDIAIRE CÔTÉ GAUCHE) (x1).  
 ARTICLE 9 = M10 BOUCHONS D'ÉCROUS (NC0001) (x2).  
 ARTICLE 10 = BARRE AVENTURE CÔTÉ DROIT (AB0028 ASSEMBLAGE CÔTÉ DROIT) (x1).  
 ARTICLE 11 = M10 BOUCHON PLAT (NC0010) (x1).  
 ARTICLE 12 = M10x1.5x40mm BOULON (SUPPORTS ARRIÈRE DROIT) (x1).  
 ARTICLE 13 = M10x1.5x50mm BOULON (SUPPORT INTERMÉDIAIRE DROIT) (x1).  
 ARTICLE 14 = S0744 ENTRETOISE DE SUPPORT INTERMÉDIAIRE GAUCHE (24mm DE LONG).



## **NOTICE DE MONTAGE**

### **Côté gauche (lorsqu'on est assis sur la moto)**

- Enlever la prise plastique, voir photo 1.
- Enlever le boulon indiqué sur la photo 2.
- Enlever le boulon indiqué sur la photo 3 (c'est le boulon de fixation du phare, il possède une entretoise, située derrière le boulon, qui doit être réutilisée).
- Remplacer le boulon tout juste enlevé avec une des vis (article 4), voir photo 4 (il possède une partie clé Allen sur une extrémité qui doit être utilisée pour le serrage) veiller à ce que l'entretoise d'origine reste en place.
- Placer une des entretoises fines (article 5), une des rondelles M8 (article 3) et un des écrous (article 2) sur le vis, voir photo 5.
- Monter l'assemblage côté gauche (article 1) en position, voir photo du haut puis fixer le boulon d'origine, voir photo 6, ne pas serrer complètement à ce stade.
- Positionner le support fendu sur la vis avant, voir photo 7.
- Placer une des rondelles M10 (article 7) sur le boulon court M10 (article 8), puis placer cet ensemble dans le trou de plaque de fixation intermédiaire, voir photo 8.
- Placer l'entretoise plus courte (article 6) sur l'extrémité du filetage puis fixer le boulon, voir photo 8.
- Serrer tous les écrous et boulons en veillant à ce que les barres aventure ne touchent pas le carénage.

### **Côté droit (lorsqu'on est assis sur la moto)**

- Enlever la prise plastique, voir photo 9.
- Enlever le boulon indiqué sur la photo 10.
- Enlever le boulon indiqué sur la photo 11 (c'est le boulon de fixation du phare, il possède une entretoise, située derrière le boulon, qui doit être réutilisée).
- Remplacer le boulon tout juste enlevé avec une des vis (article 4) (il possède une partie clé Allen sur une extrémité qui doit être utilisée pour le serrage) veiller à ce que l'entretoise d'origine reste en place.
- Placer une des entretoises fines (article 5), une des rondelles M8 (article 3) et un des écrous (article 2) sur le vis, voir photo 12.
- Positionner le support fendu sur la vis avant, voir photo 15.
- Monter l'assemblage côté droit (article 10) en position, voir photo du haut puis fixer le boulon M10 (article 12), voir photo 13, ne pas serrer complètement à ce stade.
- Placer une des rondelles M10 (article 7) sur le boulon court M10 (article 13), puis placer cet ensemble dans le trou de plaque de fixation intermédiaire, voir photo 14.
- Placer l'entretoise (article 14) sur le filetage puis fixer le boulon, voir photo 14.
- Placer l'entretoise plus courte (article 6) sur l'extrémité du filetage puis fixer le boulon, voir photo 8.
- Serrer tous les écrous et boulons en veillant à ce que les barres aventure ne touchent pas le carénage.
- Insérer les 2 cache boulon (article 9) sur les boulons, voir photos 16 et 17.
- Insérer le cache boulon plat (article 11) dans le boulon, voir photo 18.

ISSUE 1 08/11/2018 (NSY)



#### CONSUMER NOTICE

The catalogue description and any exhibition of samples are only broad indications of the Products and R&G may make design changes which do not diminish their performance or visual appeal and supplying them in such state shall conform to the order. The Buyer acknowledges no representation or warranty (other than as to title) has been given or will apply to the Products other than those in R&G's order or confirmation and the Buyer confirms it has chosen the Products as being of merchantable quality and suitable for its particular purposes. Where R&G fits the Products or undertakes other services it shall exercise reasonable skill and care and rectify any fault free of charge unless the workmanship has been disturbed. The Buyer is responsible for ensuring that the warranty on the motorcycle is not affected by the fitting of the Products. On return of any defective Products R&G shall at its option either supply a replacement or refund the purchase money but shall not be liable if the Products have been modified or used or maintained otherwise than in accordance with R&G's or manufacturer's instructions and good engineering practice or if the defect arises from accident or neglect. Other than identified above and subject to R&G not limiting its liability for causing death and personal injury, it shall not be liable for indirect or consequential loss and otherwise its liability shall be limited to the amounts paid by the Buyer for the Products or the fitting or service concerned. These terms do not affect the Buyer's statutory rights.

#### R&G RETURNS POLICY (NON-FAULTY GOODS)

Returns must be pre-authorized (if not pre-authorized the return will be rejected). Goods may only be returned direct to us if they were purchased direct from us (customer must prove if necessary). Otherwise to be returned to original vendor. Goods must be in re-sellable condition, in the opinion of R&G. All returns are subject to a 25% restocking and handling fee (25% of the gross value exc. P&P – at the prevailing price at time of purchase). The customer must pay any and all carriage charges. No returns of discontinued products, unless within 14 days of purchase. This policy does not affect your statutory rights and does not refer to faulty goods.

R&G

Unit 1, Shelley's Lane, East Worldham, Alton, Hampshire, GU34 3AQ

Tel: +44 (0)1420 89007 Fax: +44 (0)1420 87301 [www.rg-racing.com](http://www.rg-racing.com) Email: [info@rg-racing.com](mailto:info@rg-racing.com)



**MONTAGEANLEITUNG FÜR AB0028 ADVENTURE STURZBÜGEL**  
**BMW K1600 GT 2017-**



**ALLE TEILE SIND UNTEN ABGEBILDET UND GEKENNZEICHNET. BEVOR SIE MIT DER MONTAGE BEGINNEN, ÜBERPRÜFEN SIE, DASS ALLE TEILE VORHANDEN SIND.**

**Hinweis: Die Verpackung der Teile stellt nicht die Reihenfolge der Montage dar.**

Hinweis für Kits mit Plastikunterlegscheiben an den Schrauben – *Diese Plastikunterlegscheiben werden nicht für den Einbau benötigt!*

DIE UNTEN ABGEBILDETEN TEILE DIENEN LEDIGLICH ZUR ERKLÄRUNG

**Eine digitale Version dieser Montageanleitung kann auf folgender Seite heruntergeladen werden:**  
[www.rg-racing.com](http://www.rg-racing.com)

**ALLGEMEINE ANZUGSDREHMOMENTE:**

M4 SCHRAUBE = 8Nm  
M5 SCHRAUBE = 12Nm  
M6 SCHRAUBE = 15Nm  
M8 SCHRAUBE = 20Nm  
M10 SCHRAUBE = 40Nm

**SIE BENÖTIGEN FOLGENDES WERKZEUG**

- Steckschlüsselsatz mit 17mm Steckschlüssel, T45, T50 Torx-Einsätze
  - Satz Inbusschlüssel mit 4 & 8 mm Inbusschlüsseln
    - 13mm Schraubenschlüssel
  - Drehmomentschlüssel (bis 40Nm)

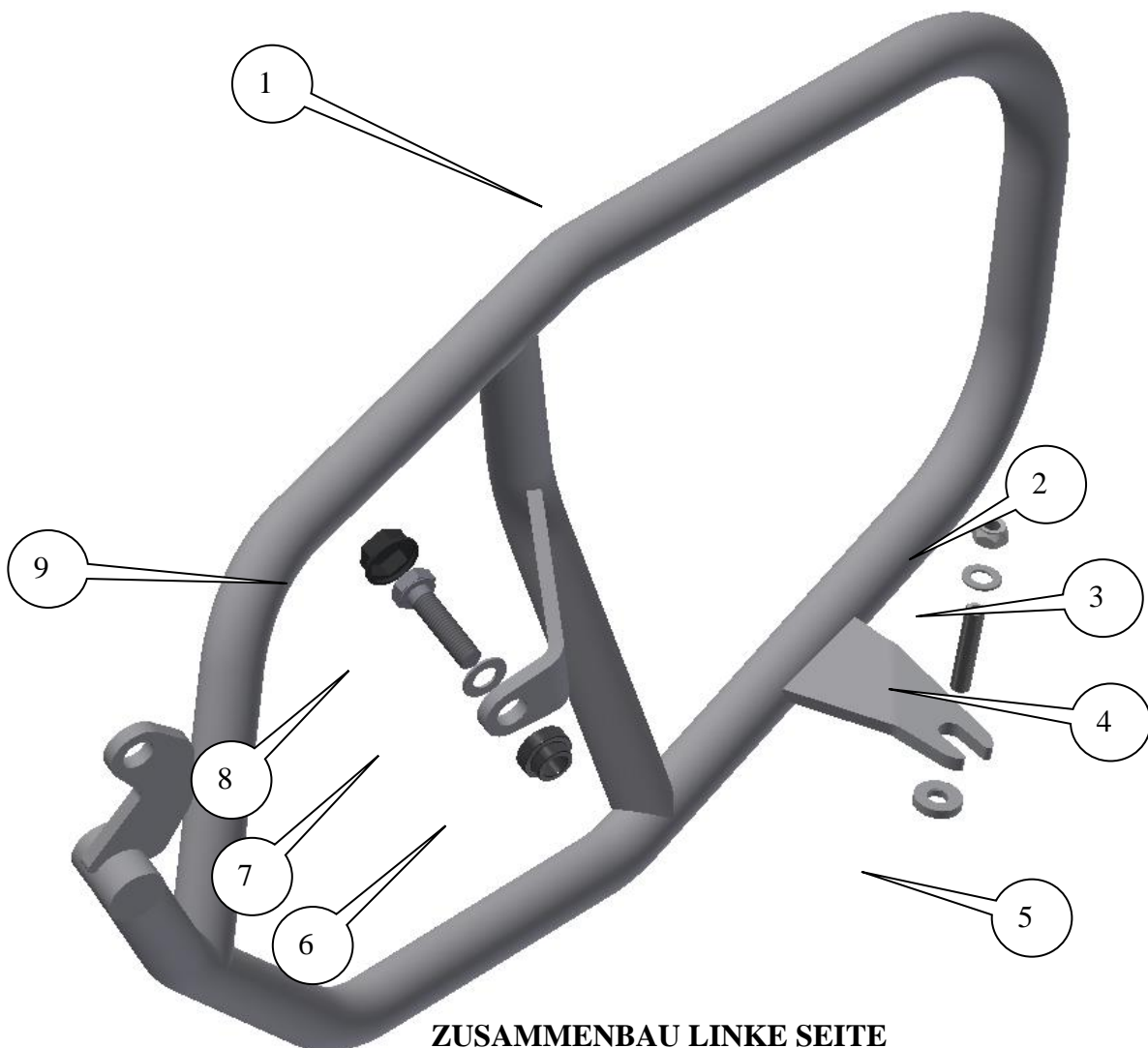
R&G

Unit 1, Shelley's Lane, East Worldham, Alton, Hampshire, GU34 3AQ  
Tel: +44 (0)1420 89007 Fax: +44 (0)1420 87301 [www.rg-racing.com](http://www.rg-racing.com) Email: [info@rg-racing.com](mailto:info@rg-racing.com)



### Inhalt des Kits

- 1x Adventure Sturzbügel linke Seite (AB0028 LHS WELDED ASSY)
- 1x Adventure Sturzbügel rechte Seite (AB0028 RHS WELDED ASSY)
  - 1x mittlerer Distanzhalter für die linke Seite (S1159-12mm)
- M10x1,5x40mm Sechskantschraube (linke Seite – mittlere Montageschraube)
  - 1x mittlerer Distanzhalter für die Rechte Seite (S0774-24mm)
- M10x1,5x40mm Sechskantschraube (Rechte Seite – hintere Montageschraube)
- M10x1,5x50mm Sechskantschraube (Rechte Seite - mittlere Montageschraube)
  - 2x Distanzhalter vordere Halterung (S0985-4mm)
  - 1x M10 flache Kappe (NC0010-rechte Seite hinten)
  - 2x M10 Unterlegscheibe (linke und rechte Seite)
  - 2x M8 Unterlegscheibe (linke und rechte Seite vorne)
  - 2x M8 selbstsichernde Mutter (L&RHS front).
- 2x M8x1,25x45mm Schrauben (vordere Halterungen linke und rechte Seite)
  - 2x M10 Kappen für die Muttern (NC0001)

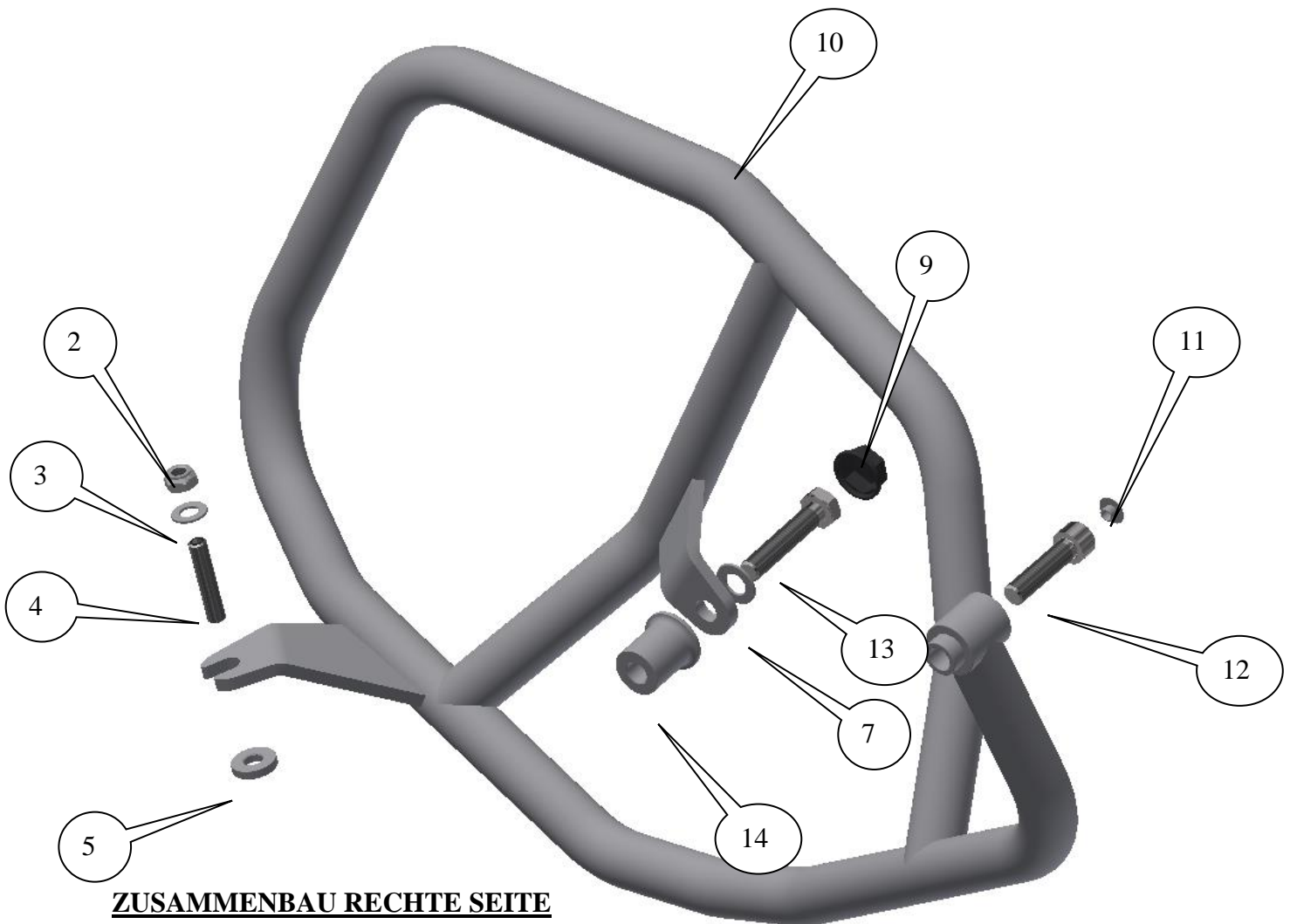


### ZUSAMMENBAU LINKE SEITE

R&amp;G

Unit 1, Shelley's Lane, East Worldham, Alton, Hampshire, GU34 3AQ

Tel: +44 (0)1420 89007 Fax: +44 (0)1420 87301 [www.rg-racing.com](http://www.rg-racing.com) Email: [info@rg-racing.com](mailto:info@rg-racing.com)



### ZUSAMMENBAU RECHTE SEITE

### LIEFERUMFANG

- ARTIKEL 1 = ADVENTURE STURZBÜGEL LINKE SEITE (AB0028 LHS ASSY) (x1)  
 ARTIKEL 2 = M8 SELBSTSICHERNDE MUTTER (x2)  
 ARTIKEL 3 = M8 UNTERLEGSCHIEBE (x2)  
 ARTIKEL 4 = M8x1.25x45mm SCHRAUBEN (VORDERE HALTERUNGEN LINK UND RECHTS) (x2)  
 ARTIKEL 5 = S0985 DISTANZHALTER VORDERE HALTERUNG (4mm LONG)  
 ARTIKEL 6 = S1159 MITTLERE MONTAGE-DISTANZHALTER LINKE SEITE (12mm Länge)  
 ARTIKEL 7 = M10 UNTERLEGSCHIEBE (x2)  
 ARTIKEL 8 = M10x1.5x40mm SECHSKANTSCHRAUBE (LINKS MITTLERE HALTERUNG) (x1)  
 ARTIKEL 9 = M10 KAPPEN FÜR DIE MUTTER (NC0001) (x2)  
 ARTIKEL 10 = ADVENTURE STURZBÜGEL RECHTE SEITE (AB0028 RHS ASSY) (x1)  
 ARTIKEL 11 = M10 FLACHE KAPPEN (NC0010) (x1)  
 ARTIKEL 12 = M10x1,5x40mm INBUSSCHRAUBE (HINTERE HALTERUNGEN RECHTS) (x1)  
 ARTIKEL 13 = M10x1,5x50mm SECHSKANTSCHRAUBE (MITTLERE HALTERUNG RECHTS) (x1)  
 ARTIKEL 14 = S0744 MITTLERE MONTAGE-DISTANZHALTER LINKE SEITE (24mm)





## **MONTAGEANLEITUNG**

### **Links (in Fahrtrichtung)**

- Entfernen Sie die Verschlusskappe aus Kunststoff, die in Abbildung 1 gekennzeichnet ist.
- Entfernen Sie die Schraube, die in Abbildung 2 markiert ist.
- Entfernen Sie die Schraube, die in Abbildung 3 markiert ist (dies ist die Schraube für die Halterung für das Scheinwerferlicht – dahinter ist ein Distanzhalter, der wiederverwendet werden muss).
- Ersetzen Sie die soeben entfernte Schraube mit einer der langen Schrauben (Artikel 4) wie in Abbildung 4 abgebildet (an einem Ende ist ein Schlitz für einen Inbusschlüssel, um die Schraube festzuziehen). Bitte darauf achten, dass der original Distanzhalter in Position bleibt.
- Einen der dünnen Distanzhalter (Artikel 5) sowie eine M8 Unterlegscheibe (Artikel 3) und eine selbstsichernde Mutter (Artikel 2) an der Schraube montieren wie in Abbildung 5 abgebildet.
- Die Einheit für die linke Seite (Artikel 1) in Position bringen, wie in der oberen Abbildung abgebildet, und mit der Originalschraube befestigen – siehe Abbildung 6. Zu diesem Zeitpunkt noch nicht festziehen.
- Positionieren Sie die geschlitzte Halterung auf der vorderen Schraube wie in Abbildung 7 abgebildet.
- Eine M10 Unterlegscheibe (Artikel 7) an der kürzeren M10 Sechskantschraube (Artikel 8) anbringen, danach die Einheit durch die Öffnung in der mittleren Montageplatte einsetzen wie in Abbildung 8 abgebildet.
- Den kürzeren gestuften Distanzhalter (Artikel 6) am hervorstehenden Gewinde anbringen und die Schraube sichern wie in Abbildung 8 abgebildet.
- Ziehen Sie alle Muttern und Schrauben fest – stellen Sie sicher, dass die Adventure Sturzbügel hierbei nicht mit den Verkleidungsteilen in Berührung kommen.

### **Rechts (in Fahrtrichtung)**

- Entfernen Sie die Verschlusskappe aus Kunststoff, die in Abbildung 9 gekennzeichnet ist.
- Entfernen Sie die Schraube, die in Abbildung 10 markiert ist.
- Entfernen Sie die Schraube, die in Abbildung 11 gekennzeichnet ist (dies ist die Schraube für die Halterung für das Scheinwerferlicht – dahinter ist ein Distanzhalter, der wieder verwendet werden muss).
- Ersetzen Sie die soeben entfernte Schraube mit einer der langen Schrauben (Artikel 4) (an einem Ende ist ein Schlitz für einen Inbusschlüssel, um die Schraube festzuziehen). Bitte darauf achten, dass der original Distanzhalter in Position bleibt.
- Einen der dünnen Distanzhalter (Artikel 5) sowie eine M8 Unterlegscheibe (Artikel 3) und eine selbstsichernde Mutter (Artikel 2) an der Schraube montieren – siehe Abbildung 12.
- Die Einheit für die rechte Seite (Artikel 10) in Position bringen, wie in der oberen Abbildung abgebildet und mit der M10 Inbusschraube (Artikel 12) befestigen wie in Abbildung 13 abgebildet. Zu diesem Zeitpunkt noch nicht festziehen.
- Positionieren Sie die geschlitzte Halterung auf der vorderen Schraube wie in Abbildung 15 abgebildet.
- Eine M10 Unterlegscheibe (Artikel 7) an der längeren M10 Sechskantschraube (Artikel 13) anbringen, danach die Einheit durch die Öffnung in der mittleren Montageplatte einsetzen – siehe Abbildung 14.
- Den längeren gestuften Distanzhalter (Artikel 14) am hervorstehenden Gewinde anbringen und die Schraube sichern wie in Abbildung 14 abgebildet.
- Ziehen Sie alle Muttern und Schrauben fest – stellen Sie sicher, dass die Adventure Sturzbügel hierbei die Verkleidungsteilen nicht berühren.
- Montieren Sie die zwei Abdeckungen für die Schrauben (Artikel 9) an den Sechskantschrauben wie in den Abbildungen 16 und 17 abgebildet.
- Montieren Sie die flache Schraubenabdeckung (Artikel 11) an der Inbusschraube wie in Abbildung 18 abgebildet.



AUSGABE 1 08/11/2018 (NSY)

**CONSUMER NOTICE**

The catalogue description and any exhibition of samples are only broad indications of the Products and R&G may make design changes which do not diminish their performance or visual appeal and supplying them in such state shall conform to the order. The Buyer acknowledges no representation or warranty (other than as to title) has been given or will apply to the Products other than those in R&G's order or confirmation and the Buyer confirms it has chosen the Products as being of merchantable quality and suitable for its particular purposes. Where R&G fits the Products or undertakes other services it shall exercise reasonable skill and care and rectify any fault free of charge unless the workmanship has been disturbed. The Buyer is responsible for ensuring that the warranty on the motorcycle is not affected by the fitting of the Products. On return of any defective Products R&G shall at its option either supply a replacement or refund the purchase money but shall not be liable if the Products have been modified or used or maintained otherwise than in accordance with R&G's or manufacturer's instructions and good engineering practice or if the defect arises from accident or neglect. Other than identified above and subject to R&G not limiting its liability for causing death and personal injury, it shall not be liable for indirect or consequential loss and otherwise its liability shall be limited to the amounts paid by the Buyer for the Products or the fitting or service concerned. These terms do not affect the Buyer's statutory rights.

**R&G RETURNS POLICY (NON-FAULTY GOODS)**

Returns must be pre-authorized (if not pre-authorized the return will be rejected). Goods may only be returned direct to us if they were purchased direct from us (customer must prove if necessary). Otherwise to be returned to original vendor. Goods must be in re-sellable condition, in the opinion of R&G. All returns are subject to a 25% restocking and handling fee (25% of the gross value exc. P&P – at the prevailing price at time of purchase). The customer must pay any and all carriage charges. No returns of discontinued products, unless within 14 days of purchase. This policy does not affect your statutory rights and does not refer to faulty goods.

R&amp;G

Unit 1, Shelley's Lane, East Worldham, Alton, Hampshire, GU34 3AQ

Tel: +44 (0)1420 89007 Fax: +44 (0)1420 87301 [www.rg-racing.com](http://www.rg-racing.com) Email: [info@rg-racing.com](mailto:info@rg-racing.com)